



# BREAD BASKETS



PP Plastic  
 Plastic Cylndric Basket (Brown) SN4517 ø250x500mm  
 Plastic Spiral Shaped Basket (Brown) SN4518 450x240x500mm  
 Plastic Boat Shaped Basket (Brown) SN4519 450x240x500mm



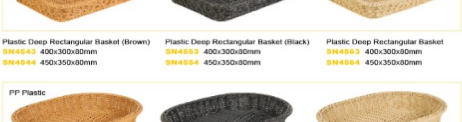
PP Plastic  
 Plastic Spiral Shaped Basket (Brown) SN4528 ø280x580mm  
 Plastic Boat Shaped Basket (Brown) SN4529 ø280x580mm  
 Plastic Square Basket (Brown) SN4529 500x400x200mm



PP Plastic  
 PP Plastic+304 S/S  
 PP Plastic+304 S/S  
 Plastic Rectangular Basket (Brown) SN4516 400x300x90mm  
 Plastic Cylndric Basket (Brown) SN4508 ø300x355mm  
 Plastic Square Basket (Brown) SN4509 350x300x355mm



PP Plastic  
 Plastic Rectangular Basket (Brown) SN4541 400x300x40mm  
 Plastic Rectangular Basket (Black) SN4541 400x300x40mm  
 Plastic Rectangular Basket SN4542 450x340x40mm  
 Plastic Rectangular Basket (Black) SN4542 450x340x40mm



PP Plastic  
 Plastic Deep Rectangular Basket (Brown) SN4543 400x300x80mm  
 Plastic Deep Rectangular Basket (Black) SN4543 400x300x80mm  
 Plastic Deep Rectangular Basket SN4544 450x350x80mm  
 Plastic Deep Rectangular Basket (Black) SN4544 450x350x80mm



PP Plastic  
 Plastic Oval Basket (Brown) SN4546 450x340x80mm  
 Plastic Oval Basket (Black) SN4546 450x340x80mm  
 Plastic Oval Basket SN4545 400x300x80mm  
 Plastic Oval Basket (Black) SN4545 400x300x80mm



PP Plastic  
 Plastic Rectangular Basket (Brown) SN4535 400x280x40mm  
 Plastic Rectangle Basket (Brown) SN4556 280x100x50mm



PP Plastic  
 Round Basket (Brown) SN4536 ø240x55mm

## Rattan Basket



Rattan  
 Oval Ferment Basket SN4510 250x150x80mm  
 Round Ferment Basket SN4512 ø180x80mm  
 Triangular Ferment Basket SN4513 150x60mm  
 SN4511 170x120x60mm  
 SN4514 ø130x60mm  
 SN4515 150x80x50mm  
 SN4516 ø110x60mm  
 SN4549 160x60mm



PP Plastic  
 Plastic Rectangular Basket (Brown) SN4575 400x340x70mm  
 Plastic Rectangular Basket (Brown) SN4537 400x300mm  
 Plastic Rectangular Basket SN4538 380x280x35mm



PP Plastic  
 Plastic Rectangular Basket (Brown) SN4547 500x400mm  
 Plastic Rectangular Basket (Black) SN4547 500x400mm  
 Plastic Rectangular Basket SN4548 600x400mm  
 Plastic Rectangular Basket (Black) SN4548 600x400mm



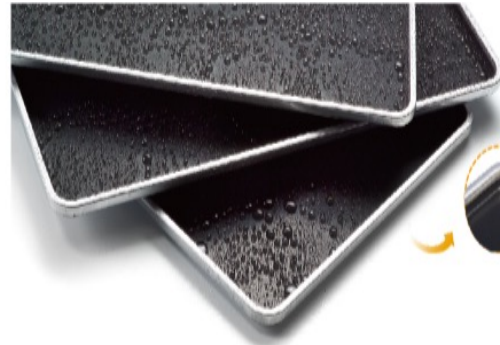
PP Plastic  
 Plastic Raffle SN4559 80x300x80mm  
 Plastic Raffle(Brown) SN4549 80x300x80mm  
 Plastic Raffle(Black) SN4559 80x300x80mm



PP Plastic  
 Plastic Basket (Brown) SN4532 500x370x200mm  
 Plastic Basket (Brown) SN4533 500x400x100mm  
 Plastic Basket (Brown) SN4534 440x370x70mm

**Feature of Alusteel Corrugated Sheet Pan (Patent No.ZL200620075116.2):**

- 1.Stronger : 1/3 life cycle longer than normal sheet pan
- 2.Easy de-pan: Corrugated process reduces the touch area between bread and tray
- 3.Saving cost: Reduce the baking time,improve the baking quality



	<b>SN1535</b> Alusteel Sheet Pan 0.6mm Alusteel 600x400x30mm
	<b>SN1537</b> Alusteel Sheet Pan 0.6mm Alusteel 600x400x50mm
	<b>SN1536</b> Alusteel Sheet Pan (Non-stick) 0.6mm Alusteel 600x400x30mm
	<b>SN1538</b> Alusteel Sheet Pan (Non-stick) 0.6mm Alusteel 600x400x50mm

	<b>SN1023</b> Alusteel Sheet Pan 0.7mm Alusteel 675x435x56mm
	<b>SN1028</b> Alusteel Sheet Pan (Non-stick) 0.7mm Alusteel 675x435x56mm

	<b>SN1007</b> Alusteel Sheet Pan (Nano Coating) 0.7mm Alusteel 718x460x25mm
	<b>SN1022</b> Alusteel Sheet Pan (Nano Coating) 0.7mm Alusteel 718x460x60mm
	<b>SN1034</b> Alusteel Sheet Pan (Nano Coating) 0.7mm Alusteel 675x435x56mm
	<b>SN1043</b> Alusteel Sheet Pan (Nano Coating) 0.7mm Alusteel 675x435x40mm

**Feature of Alusteel Sheet Pan-Flat Bar (Patent No. ZL200820186351.6)**

- 1.Flat bar design increases baking tray's strength and flatness, which would protect the tray from distortion or deformation on baking process.
- 2.Incomplete coating height design would protect the non-stick surface from stacking.
- 3 Flat bar design would support sufficient strength for stacking and would avoid tilt or collapse.
- 4.It will not have overlapping problem for flat bar design on the automatic production line.

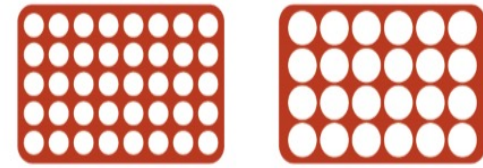
	<b>SN1081</b> 0.7mm Alusteel 600x400x30mm
	<b>SN1084</b> 0.7mm Alusteel 600x400x20mm
	<b>SN1087</b> 0.7mm Alusteel 600x400x50mm
	<b>SN1096</b> 0.7mm Alusteel 600x400x25mm
	<b>SN1091</b> 1.2mm Al Alloy 600x400x20mm
	<b>SN1082</b> 0.7mm Alusteel 600x400x30mm
	<b>SN1085</b> 0.7mm Alusteel 600x400x20mm
	<b>SN1088</b> 0.7mm Alusteel 600x400x50mm
	<b>SN1097</b> 0.7mm Alusteel 600x400x25mm
	<b>SN1092</b> 1.2mm Al Alloy 600x400x20mm

	<b>SN1569</b> 304 S/S 600x400x8mm
	<b>SN1570</b> 304 S/S 600x400x25mm
	<b>SN1580</b> 304 S/S 600x400x55mm

	<b>SN1570</b> 304 S/S 600x400x25mm
	<b>SN1580</b> 304 S/S 600x400x55mm

	<b>SN1567</b> 304 S/S 720x460x20mm
	<b>SN1568</b> 304 S/S 675x435x20mm
	<b>SN1569</b> 304 S/S 600x400x20mm
	<b>SN1671</b> 304 S/S 720x460x55mm
	<b>SN1672</b> 304 S/S 675x435x55mm

	<b>SN1560</b> 304 S/S 420x345x6mm
	<b>SN1566</b> 304 S/S 395x305x6mm
	<b>SN1573</b> 304 S/S 720x460x6mm
	<b>SN1574</b> 304 S/S 675x435x8mm
	<b>SN1576</b> 304 S/S 470x370x20mm
	<b>SN1577</b> 304 S/S 375x285x20mm
	<b>SN1579</b> 304 S/S 395x325x20mm



**SN0561** Biscuit Sheet-40 Holes (50mm)  
Silicone 570x370mm

**SN0562** Biscuit Sheet-8 Holes (80mm)  
1.8mm Silicon 570x370mm



**SN0511** Dacquoise Cake Mould-12 Indents  
PC Plastic 340x190mm



# NON-STICK TRAYS & COOLING RACKS



1.2mm Al Alloy

**SN1356** Al Alloy Corrugated Sheet Pan (Non-stick)  
600x400x25mm



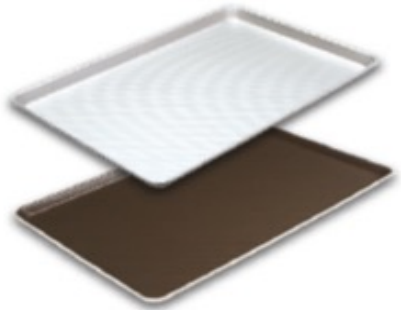
1.5mm Al Alloy

**SN1320** Al Alloy Corrugated Sheet Pan (Non-stick)  
675x435x25mm

**SN1322** Al Alloy Corrugated Sheet Pan (Non-stick)  
660x460x30mm

**SN1326** Al Alloy Corrugated Sheet Pan (Non-stick)  
718x460x25mm

### Alusteel Corrugated Sheet Pan



0.7mm Alusteel

**SN1271** Alusteel Corrugated Sheet Pan  
600x400x30mm

**SN1273** Alusteel Corrugated Sheet Pan  
600x400x50mm



0.7mm Alusteel

**SN1272** Alusteel Corrugated Sheet Pan (Non-stick)  
600x400x30mm

**SN1274** Alusteel Corrugated Sheet Pan (Non-stick)  
600x400x50mm

**SN1286** Alusteel Corrugated Sheet Pan (Non-stick)  
675x435x25mm

**SN1288** Alusteel Corrugated Sheet Pan (Non-stick)  
675x435x40mm



0.7mm Alusteel

**SN1284** Alusteel Corrugated Sheet Pan (Non-stick)  
718x460x60mm

**SN1285** Alusteel Corrugated Sheet Pan (Non-stick)  
720x400x30mm



1.5mm Al Alloy

**SN1543** Al Alloy Sheet Pan-Round Corner (P.F.A.)  
600x400x20mm



1.5mm Al Alloy

**SN1542** Al Alloy Sheet Pan (P.F.A.)  
600x400x20mm



1.5mm Al Alloy

**SN1049** Al Alloy Sheet Pan (Anodized)  
600x400x20mm



1.5mm Al Alloy

**SN1060** Al Alloy Sheet Pan (Non-stick)  
600x400x20mm



1.5mm Al Alloy

**SN1071** Al Alloy Sheet Pan (Anodized)  
600x400x20mm



1.5mm Al Alloy

**SN1072** Al Alloy Sheet Pan (Non-stick)  
600x400x20mm



1.5mm Al Alloy

**SN1011** Al Alloy Sheet Pan (Anodized)  
718x460x25mm

**SN1012** Al Alloy Sheet Pan (Anodized)  
718x460x40mm

**SN1032** Al Alloy Sheet Pan (Anodized)  
675x435x40mm

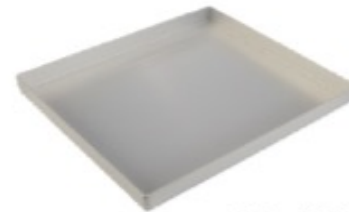




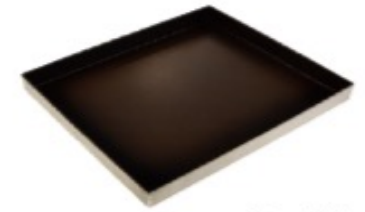
**SN1121** 1.5mm Al Alloy  
Al Alloy Sheet Pan (Anodized)  
445x330x20mm



**SN1122** 1.5mm Al Alloy  
Al Alloy Sheet Pan (Non-stick)  
445x330x20mm



**SN1123** 1.5mm Al Alloy  
Al Alloy Sheet Pan (Anodized)  
280x245x30mm



**SN1124** 1.5mm Al Alloy  
Al Alloy Sheet Pan (Non-stick)  
280x245x30mm



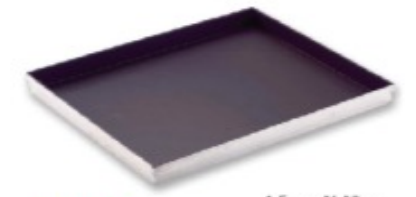
**SN1125** 1.5mm Al Alloy  
Al Alloy Sheet Pan (Anodized)  
450x350x25mm



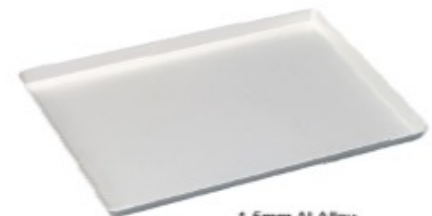
**SN1126** 1.5mm Al Alloy  
Al Alloy Sheet Pan (Non-stick)  
450x350x25mm



**SN1106** 1.5mm Al Alloy  
Al Alloy Sheet Pan (Anodized)  
450x350x55mm



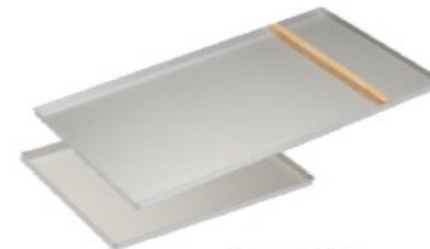
**SN1209** 1.5mm Al Alloy  
Al Alloy Sheet Pan (Non-stick)  
395x325x35mm



**SN1101** 1.5mm Al Alloy  
Al Alloy Sheet Pan (Anodized)  
448x348x20mm



**SN1102** 1.5mm Al Alloy  
Al Alloy Sheet Pan (Non-stick)  
448x348x20mm



**SN1107** 1.5mm Al Alloy  
Al Alloy Sheet Pan (Anodized)  
500x350x15mm



**SN1117** 1.5mm Al Alloy  
Al Alloy Sheet Pan (Non-stick)  
350x250x30mm

**SN1208** 1.5mm Al Alloy  
Al Alloy Sheet Pan (Non-stick)  
395x325x20mm

**SN1108** 1.5mm Al Alloy  
Al Alloy Sheet Pan (Anodized)  
350x250x15mm

**SN1118** 1.5mm Al Alloy  
Al Alloy Sheet Pan (Non-stick)  
445x330x35mm



**SN1114** 1.2mm Al Alloy  
Al Alloy Sheet Pan (Anodized)  
365x265x18mm



**SN1116** 1.2mm Al Alloy  
Al Alloy Sheet Pan (Non-stick)  
365x265x18mm



**SN1201** 1.2mm Al Alloy  
Al Alloy Sheet Pan (Anodized)  
365x285x30mm



**SN1202** 1.2mm Al Alloy  
Al Alloy Sheet Pan (Non-stick)  
365x265x30mm

**SN1205** 1.2mm Al Alloy  
Al Alloy Sheet Pan (Anodized)  
365x265x50mm

**SN1206** 1.2mm Al Alloy  
Al Alloy Sheet Pan (Non-stick)  
365x265x50mm



Cotton



**SN7991** 15" Oven Mitt  
Length 381 (Limit<205°C)

Cotton



**SN7992** 17" Oven Mitt  
Length 432 (Limit<205°C)

100% Cotton



Tan Flame Resistant

**POM17** 17" Tan Flameguard Oven Mitt (USA)  
Length 432 (Limit<205°C)

100% Cotton



**SOM17** 17" Silicone Mitt (USA)  
Length 432 (Limit<94°C)

Cotton



**SN7993** 10.5" Oven Mitt  
Length 267 (Limit<94°C)

Cotton



**SN7994** 15" Oven Mitt  
Length 381 (Limit<94°C)

100% Cotton



**SOM10** 10.5" Silicone Mitt (USA)  
Length 267 (Limit<94°C)

100% Cotton



**SOM15** 15" Silicone Mitt (USA)  
Length 381 (Limit<94°C)

Cotton



**SN7995** 17" Oven Mitt  
Length 432 (Limit<94°C)

Cotton + Silicon

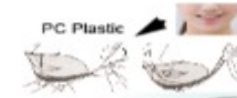


**SN7996** Silicone Oven Mitt  
Length 320 (Limit<300°C)

Limit<220°C  
Cotton



**SN7987** 14.5" Oven Mitt (Small) Length 370mm  
**SN7988** 14.5" Oven Mitt (Large) Length 370mm  
**SN7989** 17" Oven Mitt (Small) Length 432mm  
**SN7990** 17" Oven Mitt (Large) Length 432mm



PC Plastic



**SN4250** Transparent Mask 144x96mm

# PREMIUM OVEN MITTS IN ALL SIZES

# BAKERY PRODUCTS

## *BEST IN CLASS BAKERY WARE*

We at Splenor provide our client with a wide variety of BAKERY products which includes trays , moulds , Fine metal cutters , Planetary mixers , dough mixers and much more..

We provide our client a high quality of bakery products which includes SS 304 trays , cooling racks etc.

